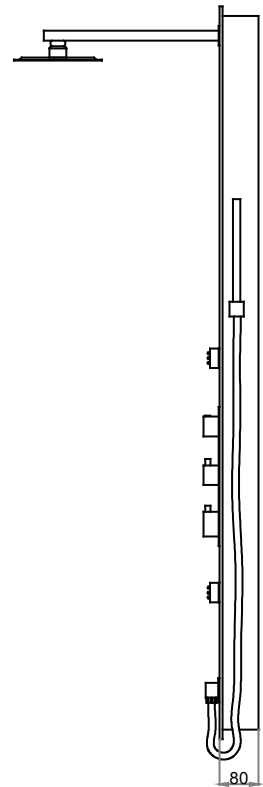
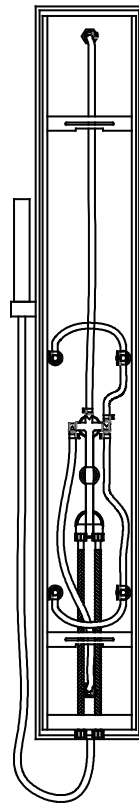
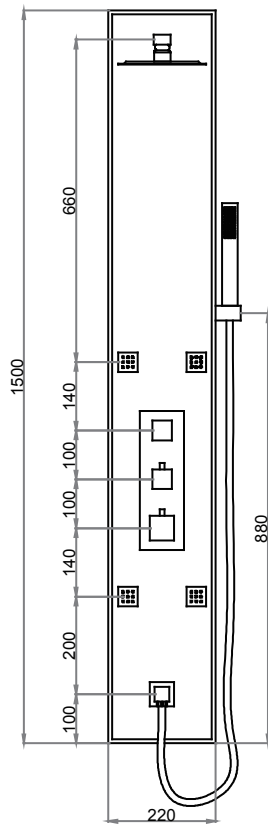
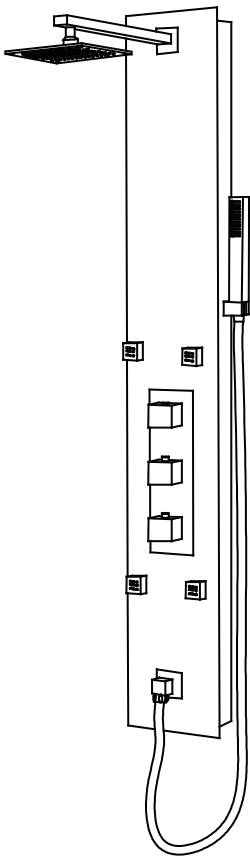


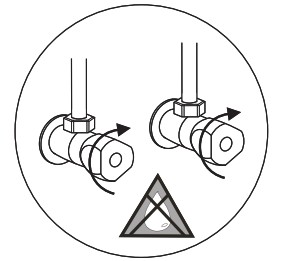
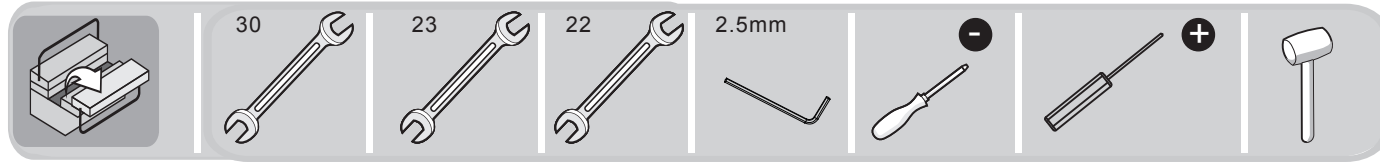


ANIMA®

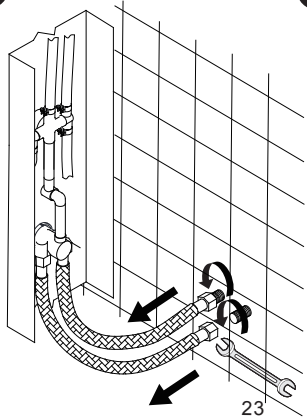
GLASHOWER



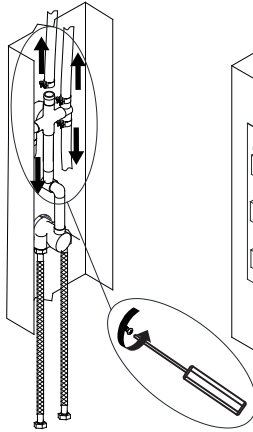
GLASHOWER



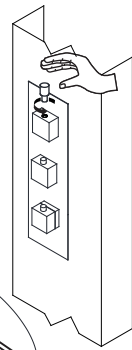
1



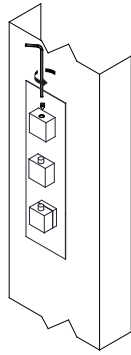
2



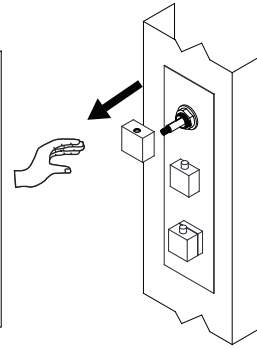
3



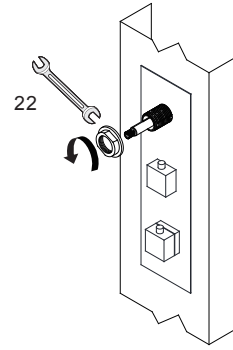
4



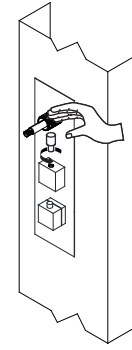
5



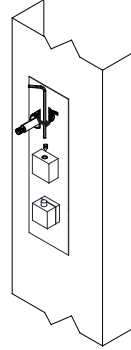
6



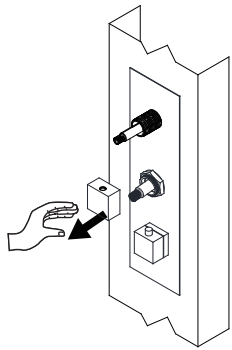
7



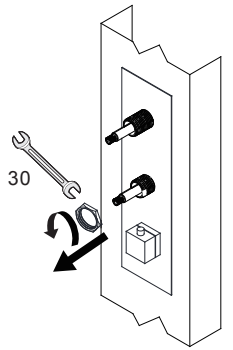
8



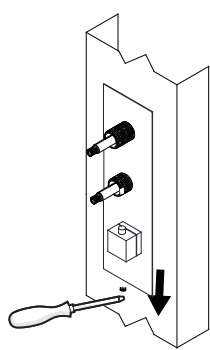
9



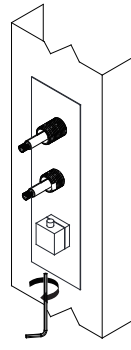
10



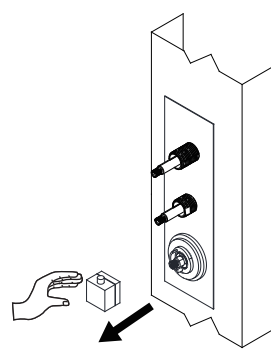
11



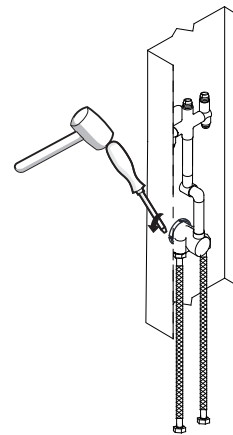
12



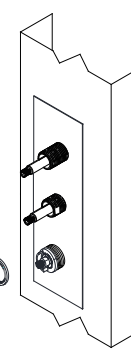
13



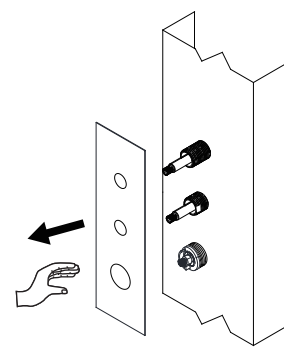
14



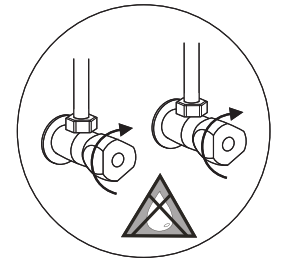
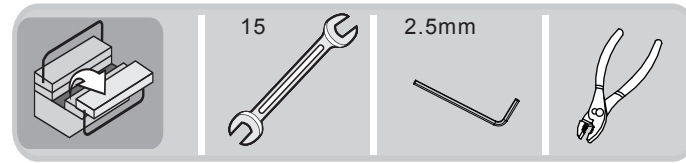
15



16

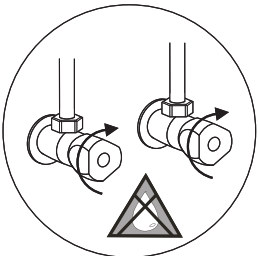
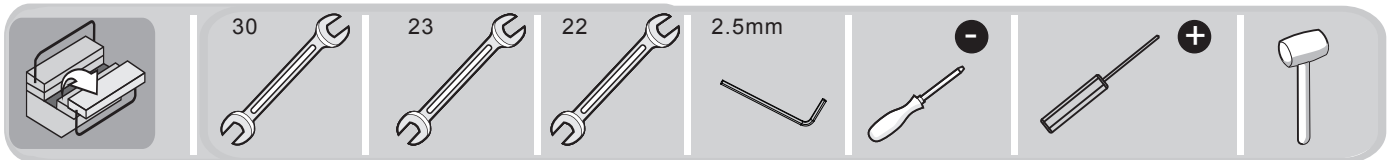


GLASHOWER



- -
 -
 -
 -
 -
 -
 -
 -
 -
 -
 -
 -
 -
 -
 -
- The two red marks must be in the same direction. ↑

GLASHOWER



- 1.
- 2.
- 3.
- 4.
- 5.
- 6.
- 7.
- 8.
- 9.
- 10.
- 11.
- 12.
- 13.
- 14.
- 15.
- 16.

keep the same direction with the red marks. ↑